

## 11-3024: Polyclonal Antibody to NALP3

<b>Clonality :</b>	Polyclonal
<b>Application :</b>	WB
<b>Reactivity :</b>	Human
<b>Gene :</b>	NLRP3
<b>Gene ID :</b>	114548
<b>Uniprot ID :</b>	Q96P20
<b>Format :</b>	Purified
<b>Alternative Name :</b>	NLRP3,C1orf7,CIAS1,NALP3,PYPAF1
<b>Isotype :</b>	Rabbit IgG
<b>Immunogen Information :</b>	A partial recombinant NALP3 protein (amino acids 1-200) was used as the immunogen for this antibody.

### Description

NALP3 (NACHT, LRR and PYD domains-containing protein 3), otherwise known as cryopyrin, is a member of the NLR (Nod-like-receptors) family. This is a pyrin-like protein, having N-terminal CARD or pyrin domains needed for homotypic protein-protein interaction, an intermediate nucleotide binding self-oligomerization NACHT domain and a C-terminal domain containing leucine-rich repeats (LRRs). NALP3 is a key component of innate immunity and its expression is restricted to immune cells and chondrocytes. It interacts with the apoptosis-associated speck-like protein PYCARD/ASC, which contains a caspase recruitment domain, and is a member of the NALP3 inflammasome complex. This complex functions as an upstream activator of NF-kappa signaling, and it plays an important role in the regulation of inflammation, the immune response, and apoptosis.

### Product Info

<b>Amount :</b>	25 µg / 100 µg
<b>Purification :</b>	Protein A Chromatography
<b>Content :</b>	25 µg in 50 µl/100 µg in 200 µl PBS containing 0.05% BSA and 0.05% sodium azide. Sodium azide is highly toxic.
<b>Storage condition :</b>	Store the antibody at 4°C, stable for 6 months. For long-term storage, store at -20°C. Avoid repeated freeze and thaw cycles.

### Application Note

Western blot analysis: 2-4 µg/ml

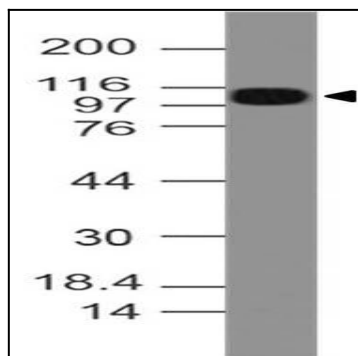


Fig-1: Western blot analysis of NALP3. Anti- NALP3 antibody (11-3024) was used at 4  $\mu\text{g/ml}$  on Ramos lysate.