

## 11-1017: Polyclonal Antibody to 14-3-3 Zeta

<b>Clonality :</b>	Polyclonal
<b>Application :</b>	WB
<b>Reactivity :</b>	Human
<b>Gene :</b>	YWHAZ
<b>Gene ID :</b>	7534
<b>Uniprot ID :</b>	P63104
<b>Format :</b>	Purified
<b>Alternative Name :</b>	YWHAZ
<b>Isotype :</b>	Rabbit IgG
<b>Immunogen Information :</b>	A partial length recombinant 14-3-3 Zeta protein (amino acids 30-245) was used as the immunogen for this antibody.

### Description

14-3-3zeta is a central cellular hub protein regulating multiple signaling pathways involved in cancer development, progression and therapeutic resistance. It is linked to endoplasmic reticulum (ER) function in neurons, with reduced levels provoking ER stress and increasing vulnerability to excitotoxic injury. It is up-regulated in malignancy, which suggests its potential as a putative drug target for the treatment of colorectal cancer and tumorigenesis in pancreas, EOC (epithelial ovarian cancer).

### Product Info

<b>Amount :</b>	25 µg / 100 µg
<b>Purification :</b>	Protein A Chromatography
<b>Content :</b>	25 µg in 50 µl/100 µg in 200 µl PBS containing 0.05% BSA and 0.05% sodium azide. Sodium azide is highly toxic.
<b>Storage condition :</b>	Store the antibody at 4°C, stable for 6 months. For long-term storage, store at -20°C. Avoid repeated freeze and thaw cycles.

### Application Note

Western blot analysis: 1-2 µg/ml

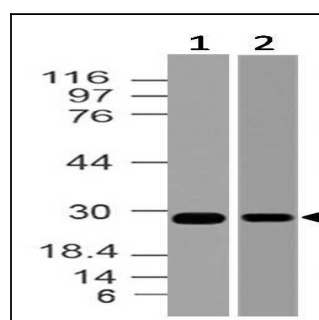
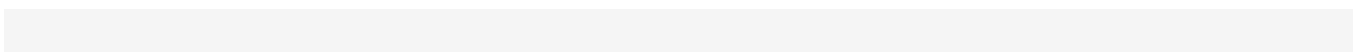


Fig-1: Western blot analysis of 14-3-3 Zeta. Anti-14-3-3 Zeta antibody (11-1017) was used at 2 µg/ml on (1) T98G and (2) U87 lysates.