

10-4027: Monoclonal Antibody to IL-3RA (Clone: ABM25C1)

Clonality :	Monoclonal
Clone Name :	ABM25C1
Application :	FACS,WB
Reactivity :	Human
Gene :	IL3RA
Gene ID :	3563
Uniprot ID :	P26951
Format :	Purified
Alternative Name :	Interleukin-3 receptor subunit alpha, IL-3 receptor subunit alpha, CD123, IL-3R-alpha
Isotype :	Mouse IgG2b, Kappa
Immunogen Information :	A partial length recombinant protein (a.a 120-323) of IL-3RA was used as the immunogen for this antibody.

Description

Interleukin-3 receptor subunit alpha (IL-3RA) or CD123 is a high-affinity receptor for interleukin-3 (IL-3), which along with the primary signaling common β (β c) subunit (CD131) forms a heterodimer, enabling cell signaling. IL-3RA chain is a glycoprotein of 360 amino acidic residues, composed by an extracellular domain of 287 amino acid residues, involving a predicted Ig-like domain, two Fn III domains, a transmembrane domain of 30 amino acid residues and by an intracellular domain of 53 residues. It is expressed on the majority of CD34+ hemopoietic progenitors and its expression is rapidly lost during erythroid and megakaryocytic differentiation, moderately decreased during monocytic differentiation and is sustained in the granulocytic lineage. IL-3RA is also expressed in a variety of hematological neoplasms including blastic plasmacytoid dendritic cell neoplasm (BPDCN), acute myeloid leukemia (AML), acute lymphoblastic leukemia (ALL), chronic myeloid leukemia (CML), Hodgkin's lymphoma and hairy cell leukemia.

Product Info

Amount :	25 μ g / 100 μ g
Purification :	Protein G Chromatography
Content :	25 μ g in 50 μ l/100 μ g in 200 μ l PBS containing 0.05% BSA and 0.05% sodium azide. Sodium azide is highly toxic.
Storage condition :	Store the antibody at 4°C, stable for 6 months. For long-term storage, store at -20°C. Avoid repeated freeze and thaw cycles.

Application Note

WB: 6-8 μ g/ml, FACS: 0.5-1 μ g/10⁶

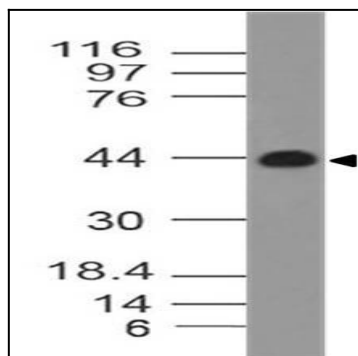


Fig-1: Western blot analysis of IL-3RA. Anti-IL-3RA antibody (Clone: ABM25C1) was used at 6 $\mu\text{g}/\text{ml}$ on hbrain lysate.

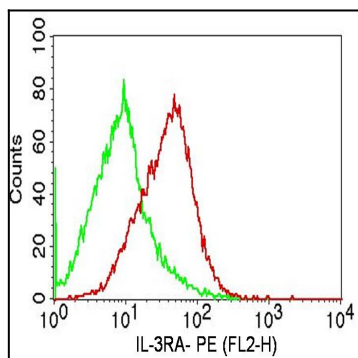


Fig-2: Cell surface flow analysis of human IL3-RA in PBMCs (lymphocytes gated) using 0.5 $\mu\text{g}/10^6$ cells of antibody (Clone: ABM25C1). Green represents isotype control; red represents anti-IL3 RA antibody. Goat anti-mouse PE conjugate was used as secondary antibody. (Cells were incubated with primary antibody for 45 min. then washed twice with PBS by centrifuging at 1100 rpm for 5 min, followed by 30 min incubation with conjugated secondary antibody. Data acquisition was done after washing twice with PBS as mentioned above).