

## 10-4020: Monoclonal Antibody to CLEC9A (Clone: ABM23H8)

<b>Clonality :</b>	Monoclonal
<b>Clone Name :</b>	ABM23H8
<b>Application :</b>	WB
<b>Reactivity :</b>	Human
<b>Gene :</b>	CLEC9A
<b>Gene ID :</b>	283420
<b>Uniprot ID :</b>	Q6UXN8
<b>Format :</b>	Purified
<b>Alternative Name :</b>	C-type lectin domain family 9 member A, CLEC9A
<b>Isotype :</b>	Mouse IgG1, Kappa
<b>Immunogen Information :</b>	A partial length recombinant protein ( a.a 15-218) of CLEC9A was used as the immunogen for this antibody.

### Description

CLEC9A is a C-type lectin receptor involved in the sensing and presentation of antigens derived from necrotic cells. It is expressed on the surface of the mouse and human dendritic cell subsets specialized for the uptake and processing of material from dead cells. CLEC9A is expressed at the cell surface as a glycosylated dimer and can mediate endocytosis, but not phagocytosis. It possesses a cytoplasmic immunoreceptor tyrosine-based activation-like motif that can recruit Syk kinase and can induce proinflammatory cytokine production. CLEC9A provides targeted recruitment of the adaptive immune system during infection and can also be utilized to enhance immune responses generated by vaccines.

### Product Info

<b>Amount :</b>	25 µg / 100 µg
<b>Purification :</b>	Protein G Chromatography
<b>Content :</b>	25 µg in 50 µl/100 µg in 200 µl PBS containing 0.05% BSA and 0.05% sodium azide. Sodium azide is highly toxic.
<b>Storage condition :</b>	Store the antibody at 4°C, stable for 6 months. For long-term storage, store at -20°C. Avoid repeated freeze and thaw cycles.

### Application Note

WB: 2-4 µg/ml

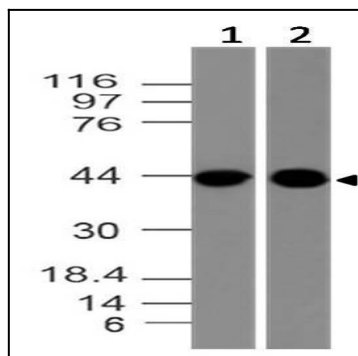


Fig-1: Western blot analysis of CIEC9A. Anti-CIEC9A antibody (Clone: ABM23H8) was used at 2  $\mu$ g/ml on THP-1 and A431 lysates.