

36-1392: Monoclonal Antibody to Cytokeratin 19 (KRT19) (Pancreatic Stem Cell Marker)(KRT19/799 + KRT19/800)

Clonality :	Monoclonal
Clone Name :	KRT19/799 + KRT19/800
Application :	IHC
Reactivity :	Human, Mouse
Gene :	KRT19
Gene ID :	3880
Uniprot ID :	P08727
Format :	Purified
Alternative Name :	KRT19
Isotype :	Mouse IgG2a, lambda + Mouse IgG1, kappa
Immunogen Information :	Recombinant full-length human KRT19 protein

Description

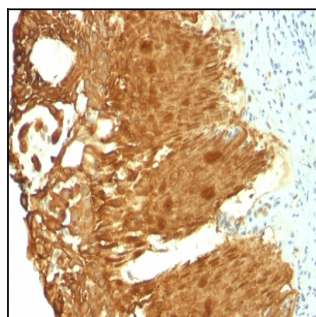
Recognizes a protein of 40kDa, identified as cytokeratin-19 (CK19), which is expressed in sweat gland, mammary gland ductal and secretory cells, bile ducts, gastrointestinal tract, bladder urothelium, oral epithelia, esophagus, and ectocervical epithelium. Anti-CK19 reacts with a wide variety of epithelial malignancies including adenocarcinomas of the colon, stomach, pancreas, biliary tract, liver, and breast. Perhaps the most useful application is the identification of thyroid carcinoma of the papillary type, although 50%-60% of follicular carcinomas are also labeled. Anti-CK19 is a useful marker for detection of tumor cells in lymph nodes, peripheral blood, bone marrow and breast cancer.

Product Info

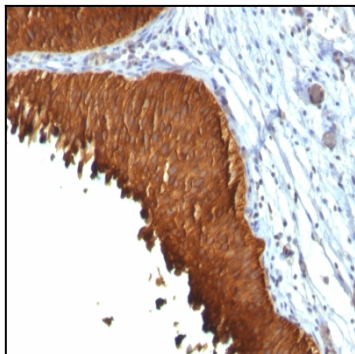
Amount :	100 µg
Purification :	Affinity Chromatography
Content :	100 µg in 500 µl PBS containing 0.05% BSA and 0.05% sodium azide. Sodium azide is highly toxic.
Storage condition :	Store the antibody at 4°C; stable for 6 months. For long-term storage; store at -20°C. Avoid repeated freeze and thaw cycles.

Application Note

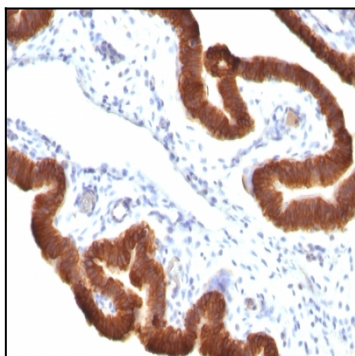
Immunohistochemistry (Formalin-fixed) (0.1-0.2µg/ml for 30 min at RT)(Staining of formalin-fixed tissues requires heating tissue sections in 10mM Tris with 1mM EDTA, pH 9.0, for 45 min at 95°C followed by cooling at RT for 20 minutes);



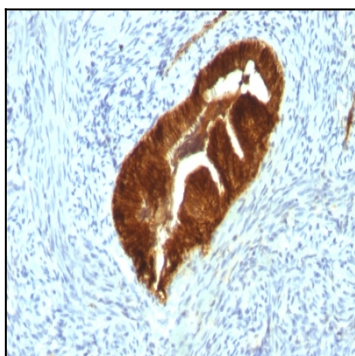
Formalin-fixed, paraffin-embedded human Cervical Carcinoma stained with Cytokeratin 19 Monoclonal Antibody (KRT19/799 + KRT19/800)



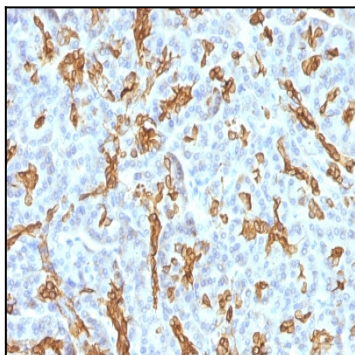
Formalin-fixed, paraffin-embedded human Bladder Carcinoma stained with Cytokeratin 19 Monoclonal Antibody (KRT19/799 + KRT19/800)



Formalin-fixed, paraffin-embedded human Ovarian Carcinoma stained with Cytokeratin 19 Monoclonal Antibody (KRT19/799 + KRT19/800)



Formalin-fixed, paraffin-embedded human Endometrial Carcinoma stained with Cytokeratin 19 Monoclonal Antibody (KRT19/799 + KRT19/800)



Formalin-fixed, paraffin-embedded human Pancreas stained with Cytokeratin 19 Monoclonal Antibody (KRT19/799 + KRT19/800)