

10-3005: Monoclonal Antibody to TLR8/CD288 (Clone: ABM15F6)

Clonality :	Monoclonal
Clone Name :	ABM15F6
Application :	IHC,FACS
Reactivity :	Human
Gene :	TLR8
Gene ID :	51311
Uniprot ID :	Q9NR97
Format :	Purified
Alternative Name :	TLR8,UNQ249/PRO286
Isotype :	Mouse IgG1 Kappa
Immunogen Information :	A partial length recombinant TLR8 protein (amino acids 750-900) was used as the immunogen for this antibody.

Description

Toll like receptor 8, also known as CD288, is a member of TLR family. It plays an important role in sensing phagocytosed pathogen. TLR8 recognizes ssRNA and recruits MyD88 and leads to the activation of transcription factor NF-kappa B. TLR8 has two splice variants, viz., TLR8v1 and TLR8v2 and one missense variant, termed G or A1G allele of TLR8. TLR8v1 has additional 19 amino acids in the N-terminus. It is predominantly expressed in lung and peripheral blood leukocytes.

Product Info

Amount :	25 µg / 100 µg
Purification :	Protein G Chromatography
Content :	25 µg in 50 µl/100 µg in 200 µl PBS containing 0.05% BSA and 0.05% sodium azide. Sodium azide is highly toxic.
Storage condition :	Store the antibody at 4°C, stable for 6 months. For long-term storage, store at -20°C. Avoid repeated freeze and thaw cycles.

Application Note

Immunohistochemical analysis: 5 µg/ml;FACS analysis: 2 µg/10⁶ cells

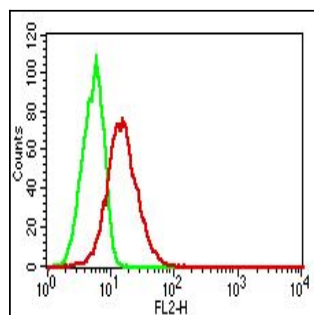


Fig-1: Intracellular flow analysis of hTLR8 in U937 using 2 µg/10⁶ cells of hTLR8 antibody (Clone: ABM15F6). Green represents isotype control; red represents anti-hTLR8 antibody. Goat anti-mouse PE conjugate was used as secondary.

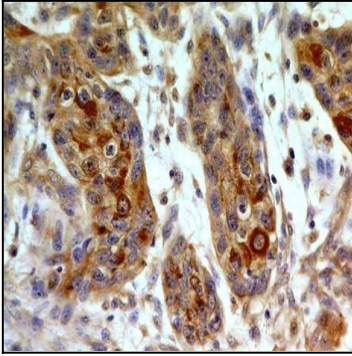


Fig-2: Immunohistochemical analysis of TLR8 in small cell carcinoma of esophagus using TLR8 antibody (Clone: ABM15F6) at 5 μ g/ml.