

### 36-1308: Monoclonal Antibody to IL-6 (Interleukin-6) / Interferon beta-2 (Hybridoma Growth Factor)(Clone : IL6/1270)(Discontinued)

<b>Clonality :</b>	Monoclonal
<b>Clone Name :</b>	IL6/1270
<b>Application :</b>	FACS,IF,IHC
<b>Reactivity :</b>	Human,Mouse
<b>Gene :</b>	IL6
<b>Gene ID :</b>	3569
<b>Uniprot ID :</b>	P05231
<b>Format :</b>	Purified
<b>Alternative Name :</b>	IL6,IFNB2
<b>Isotype :</b>	Rat IgG1
<b>Immunogen Information :</b>	Recombinant IL-6 protein

#### Description

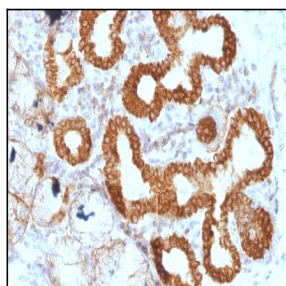
IL-6 is a potent lymphoid cell growth factor that stimulates the growth and survivability of certain B-cells and T-cells. It plays a critical role in B-cell differentiation to plasma cells and is a potent growth factor for plasmacytoma and myeloma. IL-6 is produced by a variety of cell types, including monocytes, fibroblasts and endothelial cells. Upon stimulation, macrophages, T, B, mast, and glial cells, eosinophils, keratinocytes and granulocytes also secrete IL-6. It is involved in host defense, acute phase reactions, immune responses, and hematopoiesis.

#### Product Info

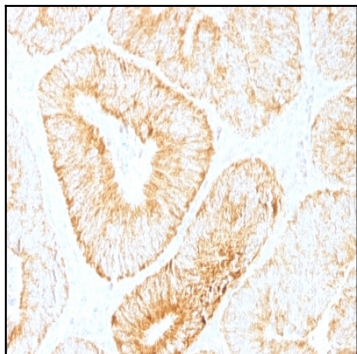
<b>Amount :</b>	100 µg
<b>Purification :</b>	Affinity Chromatography
<b>Content :</b>	100 µg in 500 µl PBS containing 0.05% BSA and 0.05% sodium azide. Sodium azide is highly toxic.
<b>Storage condition :</b>	Store the antibody at 4°C; stable for 6 months. For long-term storage; store at -20°C. Avoid repeated freeze and thaw cycles.

#### Application Note

Flow Cytometry (0.5-1 µg/million cells in 0.1ml); Immunofluorescence (0.5-1 µg/ml); Immunohistology (Formalin-fixed) (1-2 µg/ml for 30 minutes at RT);(Staining of formalin-fixed tissues requires boiling tissue sections in 10mM Tris with 1mM EDTA, pH 9.0, for 10-20 min followed by cooling at RT for 20 minutes);Optimal dilution for a specific application should be determined.



Formalin-fixed, paraffin-embedded human Esophageal Carcinoma stained with IL-6 Monoclonal Antibody (IL6/1270).



Formalin-fixed, paraffin-embedded human Colon Carcinoma stained with IL-6 Monoclonal Antibody (IL6/1270).