

36-1303: Monoclonal Antibody to Prostate Specific Antigen (PSA)(A67-B/E3 + 1A7)

| | |
|--------------------------------|---------------------------------------|
| Clonality : | Monoclonal |
| Clone Name : | A67-B/E3 + 1A7 |
| Application : | FACS,IF,IHC |
| Reactivity : | Human |
| Gene : | KLK3 |
| Gene ID : | 354 |
| Uniprot ID : | P07288 |
| Format : | Purified |
| Alternative Name : | KLK3,APS |
| Isotype : | Mouse IgG1, kappa + Mouse IgG1, kappa |
| Immunogen Information : | PSA (p30) from human sperm plasma |

Description

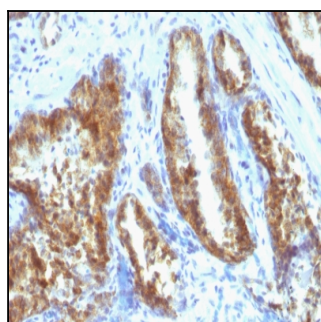
Recognizes a single protein of 33-34kDa, identified as the prostate specific antigen (PSA). This MAb is highly specific to PSA and stains prostatic secretory and ductal epithelium in both normal and neoplastic tissues. PSA is a chymotrypsin-like serine protease (kallikrein family) exclusively produced by the prostate epithelium, and abundant in seminal fluid. PSA can be detected in the sera of patients with prostatic carcinoma. It is predominantly complexed to a liver-derived serine protease inhibitor, alpha-1-antichymotrypsin (ACT). A higher proportion of serum PSA is complexed to ACT in prostate cancer than in benign prostate hyperplasia.

Product Info

| | |
|----------------------------|---|
| Amount : | 100 µg |
| Purification : | Affinity Chromatography |
| Content : | 100 µg in 500 µl PBS containing 0.05% BSA and 0.05% sodium azide. Sodium azide is highly toxic. |
| Storage condition : | Store the antibody at 4°C; stable for 6 months. For long-term storage; store at -20°C. Avoid repeated freeze and thaw cycles. |

Application Note

Flow Cytometry (1-2ug/million cells); Immunofluorescence (1-2ug/ml); Immunohistochemistry (Formalin-fixed) (1-2ug/ml for 30 minutes at RT) (Staining of formalin-fixed tissues requires heating tissue sections in 10mM Tris with 1mM EDTA, pH 9.0, for 45 min at 95°C followed by cooling at RT for 20 minutes);



Formalin-fixed, paraffin-embedded human Prostate Carcinoma stained with PSA Monoclonal Antibody (A67-B/E3 + 1A7).