

36-1288: Monoclonal Antibody to Kappa Light Chain (B-Cell Marker)(HP6053 + L1C1)

Clonality :	Monoclonal
Clone Name :	HP6053 + L1C1
Application :	WB,IHC
Reactivity :	Human
Gene :	IGKV1D-16
Uniprot ID :	P01601
Format :	Purified
Alternative Name :	IGKV1D-16
Isotype :	Mouse IgG1, kappa + Mouse IgG1, kappa
Immunogen Information :	Purified human Ig kappa chain (HP6053) & Human B-Lymphoma Cells (L1C1)

Description

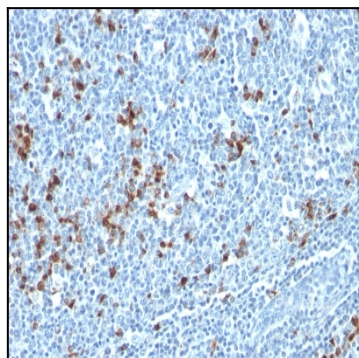
This MAbs is specific to kappa light chain of immunoglobulin and shows no cross-reaction with lambda light chain or any of the five heavy chains. In mammals, the two light chains in an antibody are always identical, with only one type of light chain, kappa or lambda. The ratio of Kappa to Lambda is 70:30. However, with the occurrence of multiple myeloma or other B-cell malignancies this ratio is disturbed. Antibody to the kappa light chain is reportedly useful in the identification of leukemias, plasmacytomas, and certain non-Hodgkin's lymphomas. Demonstration of clonality in lymphoid infiltrates indicates that the infiltrate is malignant.

Product Info

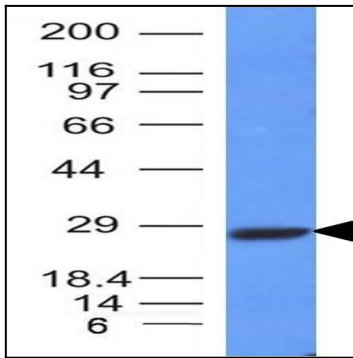
Amount :	100 µg
Purification :	Affinity Chromatography
Content :	100 µg in 500 µl PBS containing 0.05% BSA and 0.05% sodium azide. Sodium azide is highly toxic.
Storage condition :	Store the antibody at 4°C; stable for 6 months. For long-term storage; store at -20°C. Avoid repeated freeze and thaw cycles.

Application Note

Western Blot (1-2ug/ml); Immunohistochemistry (Formalin-fixed) (1-2ug/ml for 30 min at RT)(Staining of formalin-fixed tissues requires heating tissue sections in 10mM Tris with 1mM EDTA, pH 9.0, for 45 min at 95°C followed by cooling at RT for 20 minutes);



Formalin-fixed, paraffin-embedded human Tonsil stained with Kappa Light Chain Monoclonal Antibody (HP6053 + L1C1).



Western Blot Analysis of Raji Cell Lysate using Kappa Light Chain Monoclonal Antibody (HP6053 + L1C1).