

36-1281: Monoclonal Antibody to IgM (Immunoglobulin Mu Heavy Chain) (B-Cell Marker)(Clone : IM373)

Clonality :	Monoclonal
Clone Name :	IM373
Application :	FACS,IF,WB,IHC
Reactivity :	Human
Gene :	IGHM
Uniprot ID :	P01871
Format :	Purified
Alternative Name :	IGHM
Isotype :	Mouse IgG2b, kappa
Immunogen Information :	Recombinant full-length heavy chain of human IgM

Description

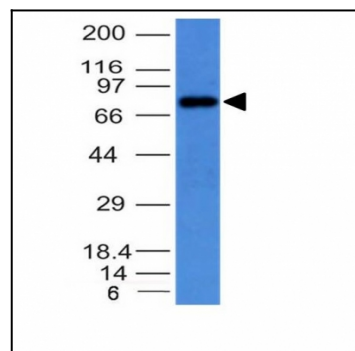
Recognizes a protein of 75kDa, identified as mu heavy chain of human immunoglobulins. It does not cross-react with alpha (IgA), gamma (IgG), epsilon (IgE), or delta (IgD), heavy chains, T-cells, monocytes, granulocytes, or erythrocytes. This MAb is useful in the identification of leukemias, plasmacytomas, and certain non-Hodgkin s lymphomas. The most common feature of these malignancies is the restricted expression of a single heavy chain class. Demonstration of clonality in lymphoid infiltrates indicates that the infiltrate is clonal and therefore malignant.

Product Info

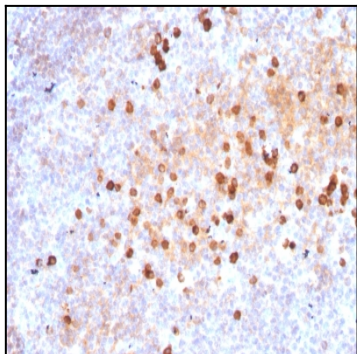
Amount :	100 µg
Purification :	Affinity Chromatography
Content :	100 µg in 500 µl PBS containing 0.05% BSA and 0.05% sodium azide. Sodium azide is highly toxic.
Storage condition :	Store the antibody at 4°C; stable for 6 months. For long-term storage; store at -20°C. Avoid repeated freeze and thaw cycles.

Application Note

Flow Cytometry (1-2ug/million cells); Immunofluorescence (1-2ug/ml); Western Blot (1-2ug/ml); Immunohistochemistry (Formalin-fixed) (1-2ug/ml for 30 minutes at RT)(Staining of formalin-fixed tissues requires heating tissue sections in 10mM Tris with 1mM EDTA, pH 9.0, for 45 min at 95°C followed by cooling at RT for 20 minutes);



Western Blot on Raji Cell Lysate using IgM Monoclonal Antibody (IM373)



Formalin-fixed, paraffin-embedded human Tonsil stained with IgM Monoclonal Antibody (IM373)